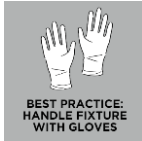
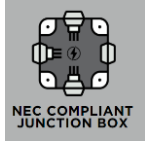
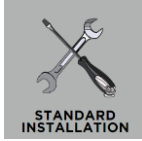
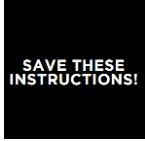


RHETT SMALL, MEDIUM, LARGE, & X-LARGE SCONCES

GLV1001; GLV1002; GLV1003; GLV1004

General Product Information



Tools Required



Safety Information

CAUTION-RISK OF FIRE

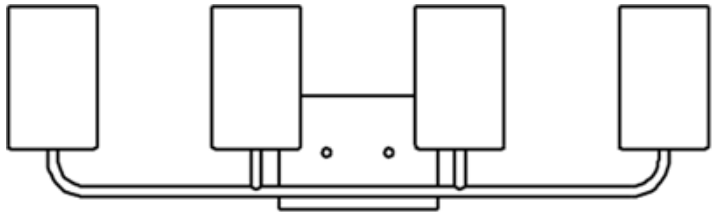
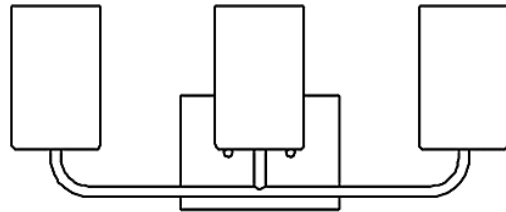
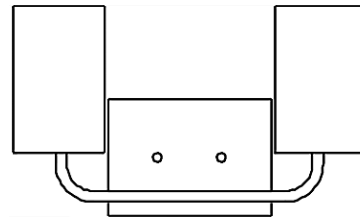
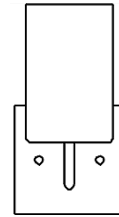
This product must be installed in accordance with the applicable installation code by a person familiar with the construction and operation of the product and the hazards involved.

USE MINIMUM 90°C SUPPLY CONDUCTORS.

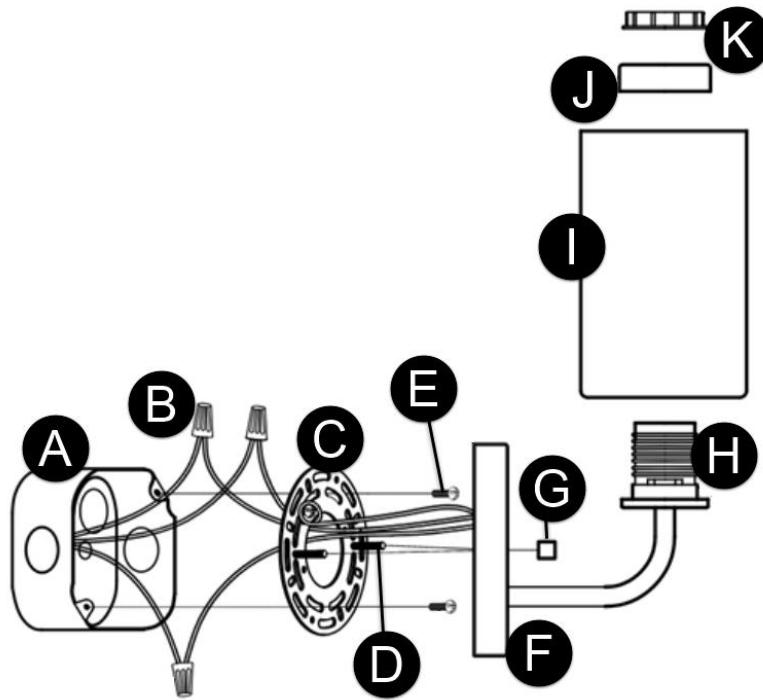


Turn off electrical current at the source before working with any lighting fixture or portable lamp.

Install and use this product in adherence with local electrical codes and regulations.



## FIXTURE PARTS



- A. Junction Box
- B. Wire Nut Connections
- C. Mounting Plate
- D. Mounting Studs
- E. Mounting Screws
- F. Canopy
- G. Cap Nuts
- H. Socket(s)
- I. Shade
- J. Socket Cover(s)
- K. Socket Ring(s)
- L. Bulb(s) (Not Illustrated, Not Included)

## INSTRUCTIONS

### I. Preparing the Fixture

1. Secure the mounting plate to the junction box.

### II. Wiring the Fixture

1. Safety first! Locate the circuit breaker and switch it off to cut off the power supply to the relevant circuits to ensure there's no electricity running through the wiring.
2. In accordance with local electrical codes, connect the fixture ground wire (bare copper or silver wire) to suitable ground. This may be a green ground screw on the mounting plate or a house wire (green or bare copper wire without insulation).
3. Twist the bare ends of the following pairs of wires together using a wire nut to secure a connection:
  - a) Hot fixture wire (black) and hot power line wire from the junction box (hot to hot)
  - b) Neutral fixture wire (white) and neutral power line wire from the junction box (neutral to neutral)
4. Carefully tuck all wires into the junction box.

### III. Installing the Fixture

1. Secure the fixture base to the mounting plate using the cap nuts.
2. Install the shade(s) by sliding them over the socket(s), then secure them in place with the socket cover(s) and socket ring(s).
3. Screw the bulb(s) into the socket(s). Refer to the socket label for max wattage information.